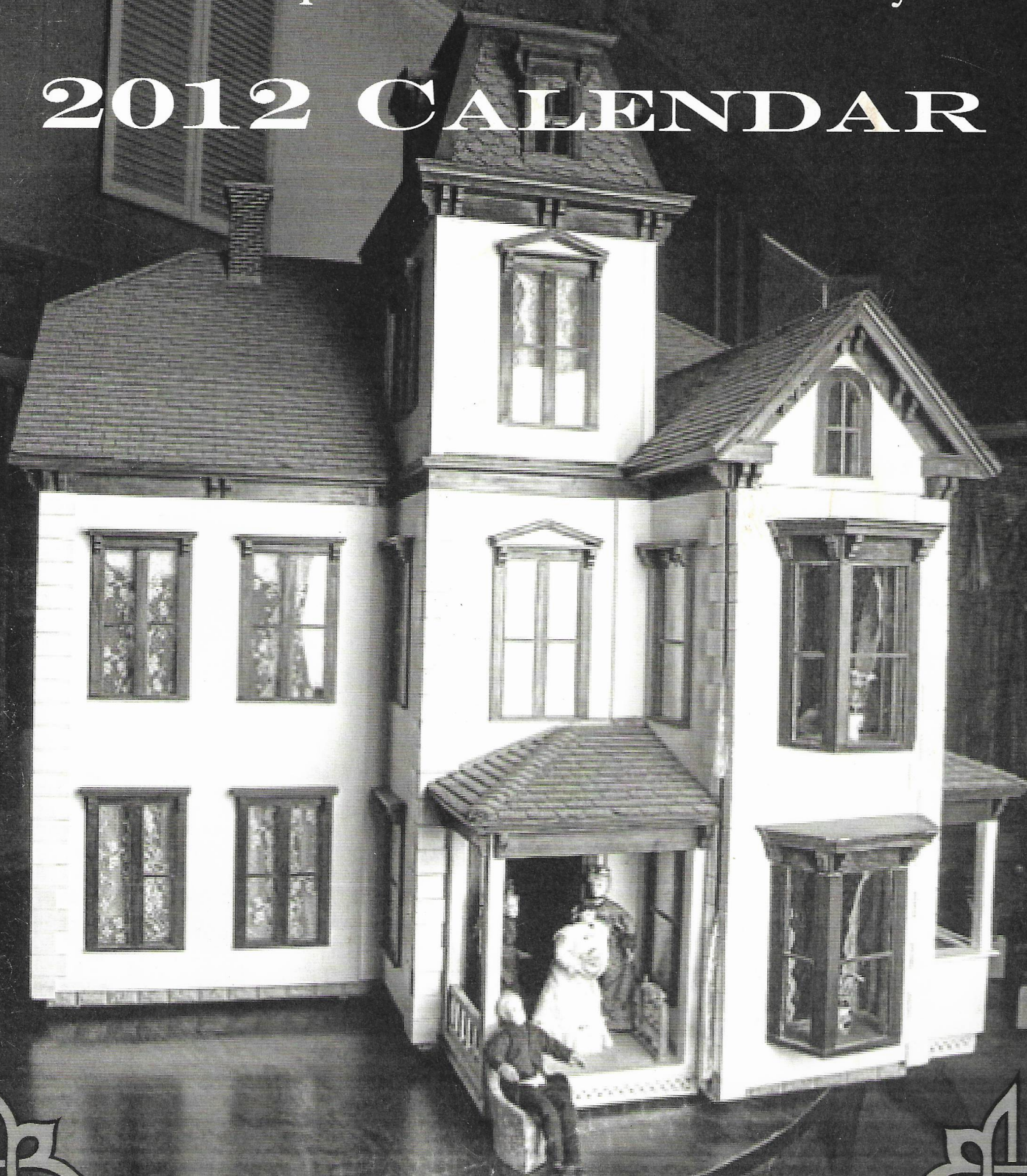


The Hampton Falls Historical Society's

2012 CALENDAR





The "Sunyside" Doll house is a replica of the Victorian house on Brown Road. Its family members are (L-R): Mildred (1880-1965), Gertrude (1878-1920), their mother, Sarah (1841-1917). Seated is the father, Warren Brown (1836-1920). Warren and Sarah had two sons, Harry B (1870-1903) and Arthur W. (1873-1960). The latter was the father of Lois Brown Perfect who lived in Hampton Falls for many years.

January 2012

Sunday	Monday	Tuesday	Wednesday	Thursday	Friday	Saturday
1	2 School Closed	3	4	5	6	7
New Year's Day	9 1926 Last Trolley Car ran for the Hampton & Amesbury Railway.	10	11	12	13	14
8						
15	16 School Closed	17	18	19	20	21
	M. L. King Day					
22	23	24	25	26	27	28
29	30	31				



The dollhouse kitchen is much as it would have appeared in the time of Sarah Brown with the ham ready to be carved and the dishes set to be taken to the dining room. Notice the icebox with its milk bottles plus ice tongs, and perhaps a breeze coming through the window to cool the pie on the Hoosier cabinet (nutch) having been baked in the black iron wood stove.

February 2012

Sunday	Monday	Tuesday	Wednesday	Thursday	Friday	Saturday
			1	2	3	4
5	6	7	8	9 Groundhog Day	10	11
12	13	14	15	16	17	18
A. Lincoln's Birthday		St. Valentine's Day				
19	20	21	22	23	24	25
	President's Day		George Washington's Birthday			
26	27	28	29			
	School Vacation begins		Leap Day			



Here is Gertrude Brown in the dining room, arranging flowers from the garden perhaps for the evening meal. NOTE the watercolor painting over the mantel as it is an original by Suzanne Perfect Crowell. In the china cabinet is china made using an original Limoges pattern along with silver and other serving pieces. In the back left corner on the sideboard is a knife box holding real silver. (See December's picture for more detail of knife box.)

March 2012

Sunday	Monday	Tuesday	Wednesday	Thursday	Friday	Saturday
			1	2	3	
4	5	6	7	8	9	10
11	12	13	14	15	16	17
Daylight Savings Time Begins 1888- 18" heavy snow		Town Voting Day School Closed		1943-First Female Selectwoman elected		St. Patrick's Day
18	19	20	21	22	23	24
		Spring Begins				
25	26	27	28	29	30	31



This is the second floor sewing room complete with sewing machine, bolts of fabric spilling from the drawers and a dress form which is in the back left corner. This room would have been accessed through the bedroom in the background. See the crocheted knitting bag and red tomato shaped pin cushion under the Tiffany lamp on the table?

April 2012

Sunday	Monday	Tuesday	Wednesday	Thursday	Friday	Saturday
1	2	3	4	5	6	7
April Fool's Day Palm Sunday					Good Friday	1st Day of Passover
8	9	10	11	12	13	14
Easter						Library Book Sale Last Day of Passover
15	16	17	18	19	20	21
		1732-First Horse Show in US here			1761- First Stagecoach in US through HF.	
22	23	24	25	26	27	28
Earth Day	School Vacation Begins				School Vacation Ends	
29	30					
	1875- Rockingham Academy burned					

May 2012

Sunday	Monday	Tuesday	Wednesday	Thursday	Friday	Saturday
		1	2	3	4	5
6	7	8	9	10	11	12
13	14	15	16	17	18	19
Mother's Day						
20	21	22	23	24	25	26
27	28 School Closed	29	30	31		
	Memorial Day (obs)		1932- Hampton Falls' Church in world	smallest Episcopal consecrated		



This bathroom would not have been original to the house when built in 1880, but a bedroom converted in later years. As a point of interest, a "water closet" was plumbed into the downstairs in 1889. The towels on the rack to the left were handmade and monogrammed by Lois Brown Perfect, Warren's granddaughter.

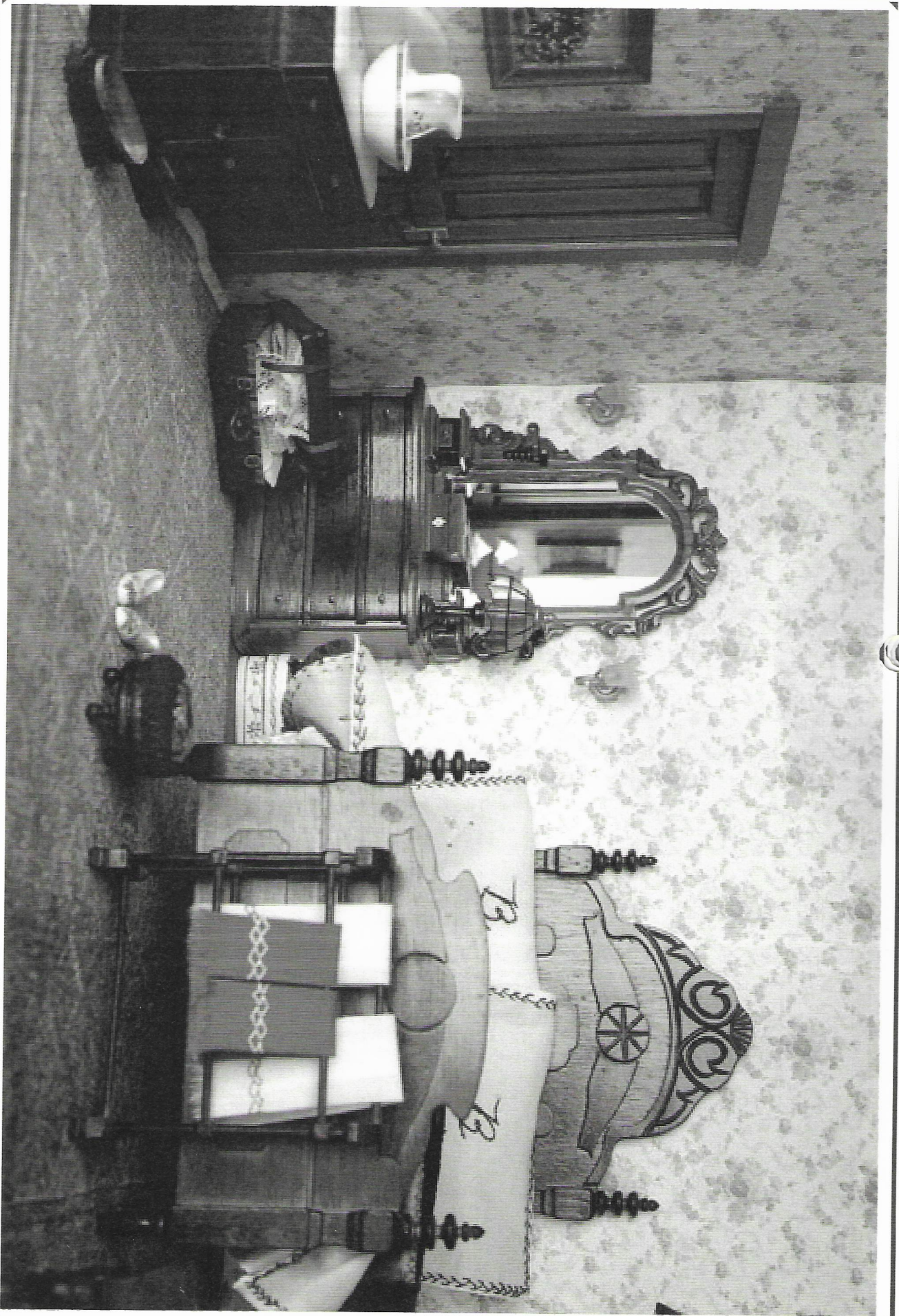
June 2012

Sunday	Monday	Tuesday	Wednesday	Thursday	Friday	Saturday
					1	2
3	4	5	6	7	8	9
10	11	12	13	14	15	16
17	18	19	20	21	22	23
			Summer Begins			
24	25	26	27	28	29	30

Oldest Road on record
laid out from Hampton
to Hampton Falls

Earliest day school ends
Flag Day

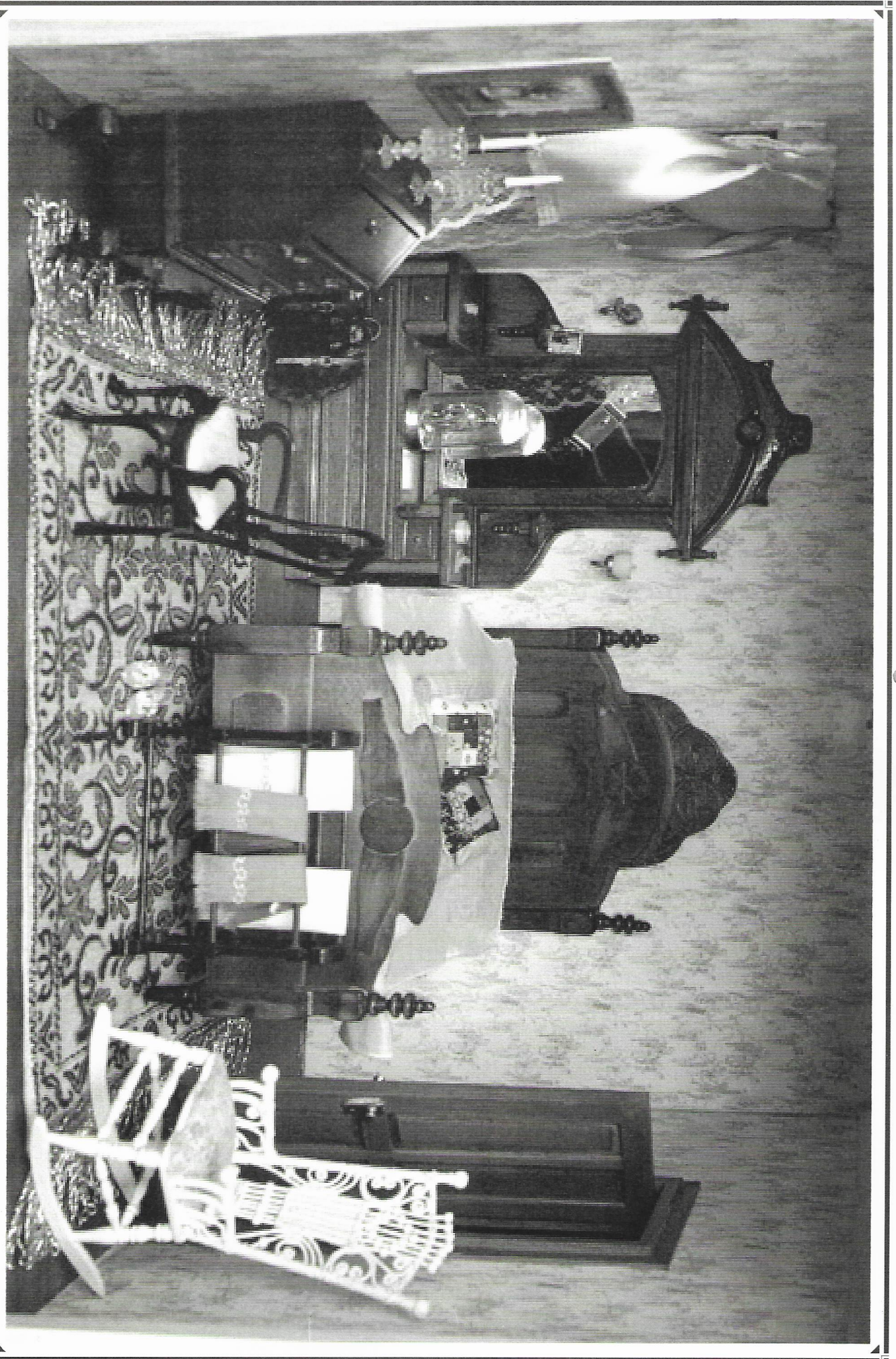
Father's Day



This room was referred to as the red room because of the red towels in the foreground as well as all the red embroidery on the white linens, all handmade by Lois Brown Perfect. The pitcher and bowl set on the commode, typical of the era, is trimmed in red as well and the wallpaper and rug are shades of red. It appears that someone has packed a suitcase for travel. Note the whimsies box between the bed and chest of drawers. It is detailed in the month of December. On the left is another original oil painting by Suzanne Perfect Crowell.

July 2012

Sunday	Monday	Tuesday	Wednesday	Thursday	Friday	Saturday
1	2	3	4	5	6	7
8	9	10	11 Independence Day	12	13	14 1908- Baptist Church & East School damaged by lightning
15	16	17	18	19	20	21
22	23	24	25	26	27	28
Parents Day						
29	30	31				



Here is the blue room as the curtains, patchwork pillows, walls and rugs are shades of blue. The pillows, towels & linens were handmade by Lois Broton Perfect. The pink slippers at the foot of the bed are made of satin. On the wall to the left is another original oil by Suzanne Perfect Crowell, measuring 1 3/4" by 2 1/2" including the frame. Notice the Queen Anne style desk & chair and the oak Victorian style bedroom furniture.

August 2012

Sunday	Monday	Tuesday	Wednesday	Thursday	Friday	Saturday
			1	2	3	4
5	6	7	8	9	10	11
12	13	14	15	16	17	18
19	20	21	22	23	24	25
			1922-200th Anniversary Celebration			1901-John T. Brown donated Library to town
26	27	28	29	30	31	



*Can you imagine being a child and having this playroom in the attic filled with such delightful toys?
Here we have a doll house within a doll house. The two braided rugs are handmade. Notice the tea table set for tea with candlesticks.*



Wouldn't you love to have a linen closet filled as this is with handmade linens, towels, pillows and blankets? Everything in both sets of shelves was handmade by Lois Brown Perfect. The opening in the floor partially covered by the rug is actually the stairwell.

October 2012

Sunday	Monday	Tuesday	Wednesday	Thursday	Friday	Saturday
	1	2	3	4	5	6
7	8 Columbus Day	9	10	11	12	13
14	15	16	17	18	19	20
21	22	23	24	25	26	27
28	29 1727-Two Day Earth-quake—Brimstone Hill	30	31 Halloween			



This studio in the tower is an artist's delight with a painter's box ready for use. The oil painting on the back wall is an original oil of a Vermont village by Reed Prescott of Vermont, a well known New England landscape artist. On the easel is another original oil by Suzanne Perfect Crowell. You can actually play chess with the set pictured on the settee.

November 2012

Sunday	Monday	Tuesday	Wednesday	Thursday	Friday	Saturday
				1	2	3
4	5	6	7	8	9	10
Daylight Savings Ends		Election Day	1840— First Eastern RR train through town	15	16	17
11	12	13	14			
Veterans' Day						
18	19	20	21	22	23	24
1755—3rd Earthquake						
25	26	27	28	29	30	
	1899— Hampton- Amesbury RR reached Hampton Falls			Thanksgiving Day		



The inlaid knife box on the left holds individual forks, knives and spoons made of real silver. It was custom made from a picture of Sarah Brovon's dining room. The rollinsies box is actually an antique pill box made by Knox of Rensselaer NY around the turn of the century. The box is of basswood, sawed into blocks then split into pieces that were dried and planed. The thin shavings were used to make the box by women and children who were paid 3 to 7 cents per hundred. The boxes were shipped down the Hudson River and used for world-wide distribution of medical medicines until the mid-19th century.

Special thanks to Phil Chura, Professional Photographer, for his expertise in creating an album of wonderful photographs of the rooms of Sunnyside Doll House for use in publishing this calendar. Please visit his website at www.Churaphotography.com and click on flash site for more of his timeless individual and family portraits.

Front Cover:

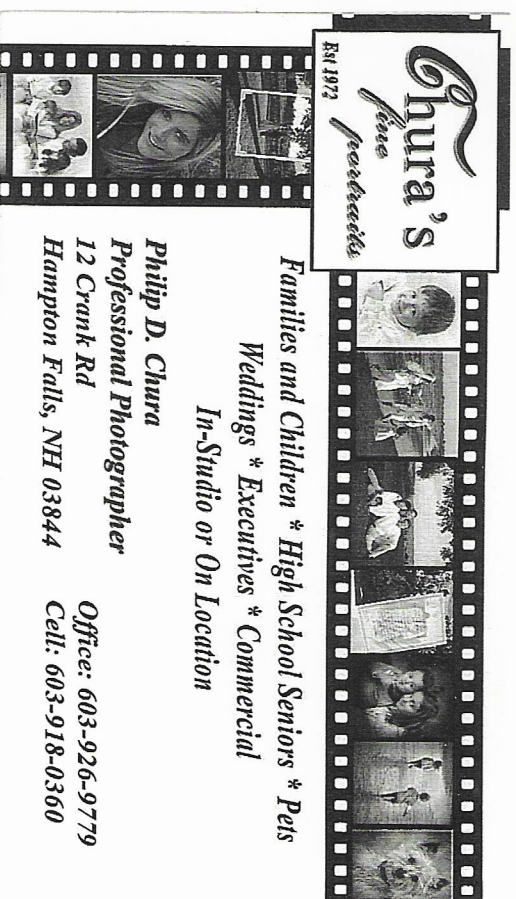
The Sunnyside Doll House as it resides in the Hampton Falls Historical Society's Museum waiting for visitors to have a close up look.

On the front porch are (L-R) daughters Mildred and Gertrude and next to them is their mother, Sarah Brown. Seated is the father, Warren Brown, author of "The History of the town of Hampton Falls, New Hampshire, ..., 1640-1900", in 1900.

The doll house was acquired by the HFHS by auction in February 2010 from the estate of Suzanne Perfect Crowell, great-granddaughter of Warren Brown.

The doll house measures: 40"x40"x43" tall and was made in Pittsford, Vermont by Fred Harvie as an exact replica of the Warren Brown house on Brown Road. Many of the linens and curtains were handmade by Lois Brown Perfect, granddaughter of Warren Brown. Jeremy Perfect, Lois's son, also did some of the exterior carpentry and his sister, Suzanne, did some of the paintings.

Acknowledgments & References: *Sunnyside Files*, publ. 1976 by Suzanne Perfect Crowell



Chura's
Family Portraits
EST. 1972

*Families and Children * High School Seniors * Pets
Weddings * Executives * Commercial
In-Studio or On Location*

Philip D. Chura
Professional Photographer
12 Crank Rd
Hampton Falls, NH 03844

*Office: 603-926-9779
Cell: 603-918-0360*

Hampton Falls Historical Society

Our Mission:

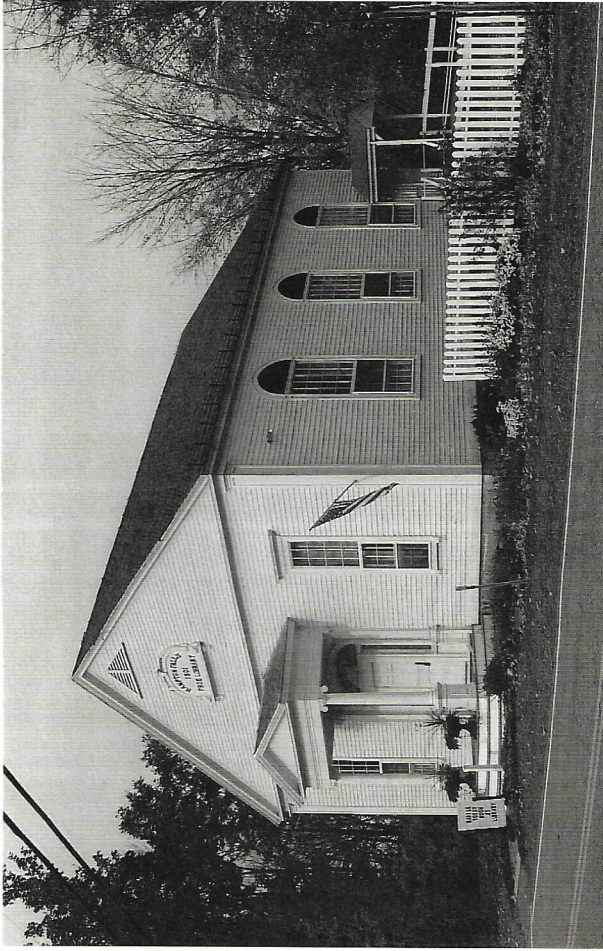
The Hampton Falls Historical Society is a not-for-profit institution which investigates, collects, preserves, educates, and illuminates whatever may relate to the history of Hampton Falls.

Membership Information:

Members have voting privileges and receive newsletters at least twice per year. Dues are collected each calendar year and are as follows:

Individual \$10, Family \$25, Senior \$7, and Business \$35.

Checks can be payable to the Society and mailed to
PO Box 104, Hampton Falls, NH 03844



Our Museum:

Across from the Town Hall on Route 88, our museum was built in 1835 as a Baptist Church. In 1901 it became our Town Library and, since 2002, houses the Historical Society's genealogy and memorabilia collections. It is open at least once a week from June 1 through October and for special events.

Trustees:

David French, President
Anne Sanborn Coombs, Secretary
Marietta Garavaglia, Treasurer
Barbara Burns, Membership Chair
Ann Antaya, Alternate
Forrest Brown, Trustee

Rachel Grogan, Alternate
Beverly Mutrie, Alternate
Robert Perkins, Trustee
Brad Peterson, Trustee
Carolyn Petit, Trustee
Roberta Sliva, Trustee

HFHS Membership Application

Name: _____

Address: _____

Email: _____

Individual Family Senior Business

Dues Sent \$ _____